

## AN IOT BASED PLANT LEAF DISEASE DETECTION USING MACHINE LEARNING AND AUTO SPRAYING MECHANISM

R. Gowtham and Dr. R. Jebakumar

Department of Computer Science and Engineering,  
Faculty of Engineering and Technology,  
SRM Institute Of Science And Technology,  
Kattankulathur Campus, Tamil Nadu-603203, India.

Email: [gr3134@srmist.edu.in](mailto:gr3134@srmist.edu.in), [jebakumr@srmist.edu.in](mailto:jebakumr@srmist.edu.in)

### Abstract:

Our Indian agricultural farming takes part a major function in area of producing crops or yield of the crops. Most of the people rely on agriculture for their sustainance in the world since the agriculture is the base for the development of economy in a country. This field of land farming provides various employment and job opportunities to major percentage of the people. The healthy or the unhealthy condition of the plants plays an important role in order to earn better profit for the agricultural people. This can be achieved by the continuous observing the condition of the plant health which is needed at various stages of plant growth because to prevent several number of diseases that affects plants while growing. This existence of diseases and pests may affect the act of judging the crop cultivation and has the ability to minimize the yield of crop essentially. Nowadays the system depends on naked eyes monitoring which is considered be a time taking process. Hence, there is a need for the automatic identification of plant diseases that can be adopted to identify the plant disease maximum at the beginning itself. So many number of disease tracking strategies are introduced by the farmers at the continuous intervals of times in order to eradicate the plant diseases. This automated disease identification and prevention system has been introduced by merging the advantages of IOT agricultural land monitoring system and some of the Machine Learning algorithm. We can also use various IOT sensing devices such as thermal reading sensor, moisture sensor including color sensors depends on the difference with the leaves case of the plants where the values that depends on temperature sensor, humidity sensor and color parameters that are used to detect the presence of plant diseases and prevented using the automatic medicine spraying process.

**Keywords:** Machine learning, SVM algorithm, Convolutional Neural Network, feature extraction, segmentation, disease identification, disease prevention, auto spraying, classifying disease, insecticides, fungicides

### INTRODUCTION

Our Indian agricultural farming takes part a major function in area of producing crops or yield of the crops. Most of the people rely on agriculture for their sustainance in the world since the agriculture is the base for the development of economy in a country. This field of land farming provides various employment and job opportunities to major percentage of the people [1][2].

The healthy or the unhealthy condition of the plants plays an important role in order to earn better profit for the agricultural people. This can be achieved by the continuous observing the condition of the plant health which is needed at various stages of plant growth because to prevent several number of diseases that affects plants while growing. This existence of diseases and pests may affect the act of judging the crop cultivation and has the ability to

minimize the yield of crop essentially [3][4].

Nowadays the system depends on naked eyes monitoring which is considered be a time taking process. Hence, there is a need for the automatic identification of plant diseases that can be adopted to identify the plant disease maximum at the beginning itself [5]. So many number of disease tracking strategies are introduced by the farmers at the continuous intervals of times in order to eradicate the plant diseases [6].

This automated disease identification and prevention system has been introduced by merging the advantages of IOT agricultural land monitoring system and some of the Machine Learning algorithm [7][8][9].

We can also use various IOT sensing devices such as thermal reading sensor, moisture sensor including color sensors depends on the difference with the leaves case of the plants where the values that depends on temperature sensor, humidity sensor and color

parameters that are used to detect the presence of plant diseases and prevented using the automatic medicine spraying process[10].

### **LEAF DISEASE SYMPTOMS:**

The plants leaf majorly suffering from the micro organisms such as bacteria's, fungus and viruses. These symptoms of various types of diseases may be visible to the naked eyes to the farmers from the disease affected plants. Symptoms may appear in the form of a identifiable changes in the colour, normal shape or the proper functioning of the plant such as

photosynthesis due to the diseases caused by these organisms. Hence, we can discuss those plant symptoms in a detail manner[11][12].

Various types of the fungal diseases may appear in the plants such as tiny, yellowish green lesions on young leaves are symptoms which normally seen as the dark foliages in the plants. These disease causing fungus may cause most serious disease in the various types of the vegetable plants. This fungal disease may even affect the flowers, vegetables, fruits, stem and the roots of the plant[13][14][15].

## **2 Related work (or) Inference From the Survey:**

In reference to the above plant disease prediction and prevention, we have conducted a survey on how these plant diseases occur in a plant leaf under which circumstances, based on the available set of datasets with the help of the python programming language using the healthy and the unhealthy set of leaves[16].

In the early stages of the agricultural pest detection, mainly various types of supervised and unsupervised learning methodologies had been utilized in the purpose of the identification of the leaf infections[17][18]. There are some of the general steps that all the systems follow where pictures are gathered with the help of the modernized cameras and after these collected images are preprocessed by using some of the available preprocessing techniques[19].

Further the people who are known to be the experts, they extract the features from the above preprocessed pictures and those features are provided as inputs to the classifying system. Here, the accuracy of the classification depends on the type of the technique used for feature extraction[20]. But it is quite complex and the time consuming process.

In these days, the Convolutional Neural Networks or the CNN model possess a major role in the process of the image segmentation and the classification because to improve the classification accuracy[21][22]. The CNN networks can automatically learn the features and be classified within the less amount of the time. Here are some of the recent trends and discussions by utilizing Convolutional Neural network and the machine learning techniques for the farming applications[23][24].

In the referenced papers, various authors proposed various CNN network models to identify and classify the various or the distinct number of infections affected because of the tomato leaves, apple leaves, cucumber leaves, grape leaves, potato leaves and other leaves also. There are three commonly occurring diseases are bacterial diseases, viral and the fungal infections. All their different diseases are captured separately and stored as the images, whenever required, they are provided as the input to the designed CNN model, processed and finally evaluated whether the leaf is the healthy leaf or not[25].

## **3 Algorithm:**

The objective of this algorithm is to recognize abnormalities that occur on plants in their greenhouses or natural environment. The objective of this algorithm is to recognize abnormalities that occur on plants in their greenhouses or natural environment. The Machine learning algorithms are the engines of machine learning, meaning it's the algorithms that turn a data set into a model that depends on the kind of problem we are solving, the computing resources available, and the nature of the data. The objective

of this algorithm is to recognize abnormalities that occur on plants in their greenhouses or natural environment. The algorithm was contrasted with other machine learning models for accuracy. The accuracy can be increased when trained with vast number of images and by using other local features together with the global features.

#### Algorithm In Brief -

##### SVM(SupportVectorMachine):

Support vector machines(SVM)were the kind of supervised ML algorithm that is mainly used for both classification or regression challenges in the real world problems which analyzes the data used for classification.

However it is mostly used for the classification problems. Support vector machine can also solve linear and non-linear problems and work well for many real world practical problems .

Support vectors are simply the co-ordinates of the individual observation. A support vector machine takes the data points and outputs the hyperplane which is in two dimensions or it's simply a line that best separates the tags.

This is the decision boundary: anything that falls to one side of it we will classify as blue and anything that falls to the other end is specified as red color.

It can solve real world problems and work well for many practical problems since the idea of SVM is simple. This simplicity is shown below in figure 3.1.

Figure 3.1 Leaf Disease Classification

In developing the successful SVM forecaster, feature extraction is the very important and the first step. The features are determined as shown in the following figure 3.2:

Figure 3.2 Feature Extraction

#### Advantages of SVM Algorithm:

1. High Accuracy rates.
2. Fully automated.
3. Security level can be improved.
4. Reduction in Computational Complexity.
5. Code can be written in Python.

## 4

### COMMONLY OCCURRING PLANT DISEASES:

#### a) BACTERIAL DISEASE SYMPTOMS:

The disease is named "bacterial leaf tiny points on the leaves" as shown in the below figure 4.1. Various types of the bacterial diseases may appear in the plants such as tiny, yellowish green lesions on the budding leaves are symptoms that are normally observed as the dark foliage in the plants. These disease causing bacteria may cause most serious disease in the various types of the vegetable plants. These diseases



can be treated using various types of pest control chemicals that are mentioned in the upcoming solutions for the treatment of the diseases.

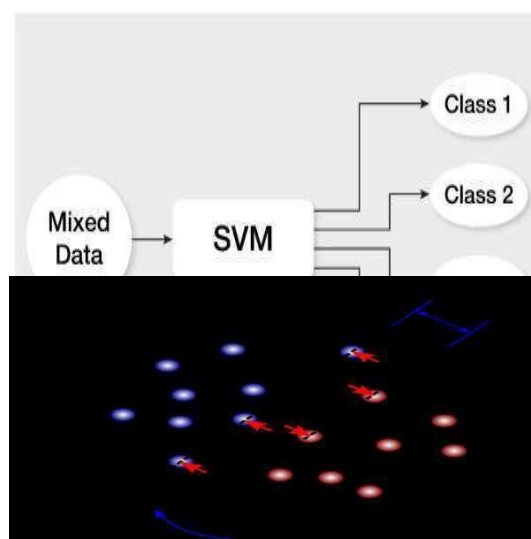


Figure 4.1 Bacterial Leaf disease

#### b) VIRAL DISEASE SYMPTOMS:

Many of the viruses that causes the viral diseases may be identified by the farmers through thenaked eyes by the farmers. But when it is not treated properly while the disease affects the plantswhich may leads to serious damages to the entire agricultural field. These viruses can be foundnot only in the leaves but also in the stems, fruits, vegetables even in the roots and flowers. Themodernagriculturalpracticesmaybeusedt oreattheseviral diseasesasmuchaspossible. Some of the viral diseases are shown in the below figure 4.2

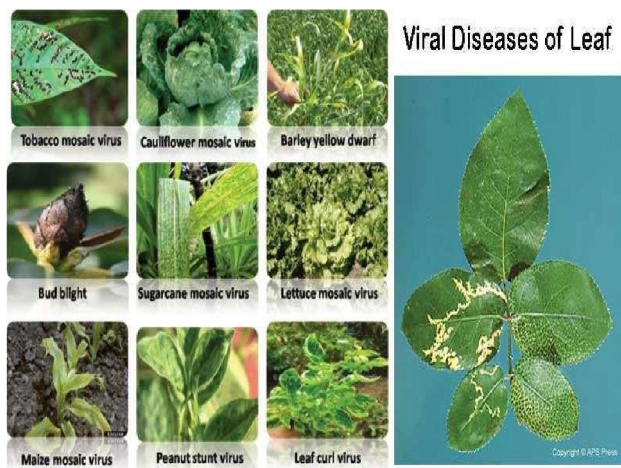
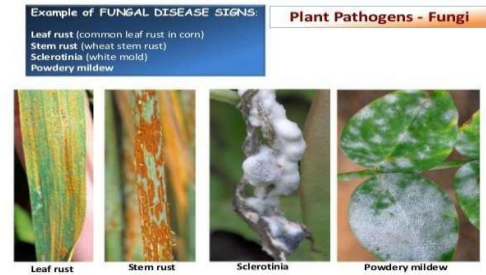


Figure4.2ViralLeafdiseases

c) *FUNGAL DISEASES SYMPTOMS:*

Varioustypes ofthe fungal diseases mayappear in the plants such as tiny, yellow is hgreen lesions leaf's which are the symptomsthatnormallyobserved by the dark foliages in the plants. These disease causing fungus may cause most serious disease in the various types of the vegetable plants.Thisfungaldiseasemayevenaf ecttheflowers,vegetables,fruits,ste mandtherootsoftheplants as represented in the below figure 4.3.

Figure4.3FungalLeafdiseases



### Types Of Infectious Diseases And Chemicals To Prevent:


There are number of very commonly occurring plant diseases, symptoms and the preventive measures to be taken to take care of the plants from these diseases are discussed below in detail with the help of the different points and also the table.






- 1) LOCALIZED SYMPTOMS are congested to a specialized part of an organ or parts of plant (example, leaf spots and anthracnose affected by varied organisms).
- 2) SYSTEMIC SYMPTOMS are the organisms that spreads from a affected part (example, downy mildews).
- 3) ENDEMIC SYMPTOMS can be found in a specific state or region. This infections may exist in either or other form in a particular region.
- 4) EPIDEMIC OR EPIPHYTIC symptoms occurs in huge area, but periodically can also be found commonly in the local regions.
- 5) NON-INFECTIOUS (ABIOTIC)


symptoms where these are nutritional imbalancing of the plants for example the commonly occurring Kair disease of rice due to Zinc nutrition, uncomfortable ecosystem example crop wilt.

- 6) POLYCYCLIC SYMPTOMS may have quite the plants during a crop yielding months. Example is: potato blight.
- 7) MONOCYCLIC SYMPTOMS may rise of the analogous of improvement in money thanks to interests i.e. these infections that might had existing generation on the yielding season. for example, wheat smut.
- 8) SPORADIC SYMPTOMS were the one that occurs at common intervals during a medium to high risk form i.e., plant blights, leaf wilt.
- 9) PANDEMIC SYMPTOMS lead to huge losses.

### 5 GENERAL SYMPTOMS OF PLANT DISEASES:

S.NO	Name of the Disease	Type of the Disease	About Disease	Example
1.	Mildew:	Fungal Disease	these are the commonly occurring disease in the plants during the winter seasons of the climatic conditions	
2.	Plant Rusts:	Fungal and Bacterial Disease	These are the commonly occurring bacterial disease that are found	

			similar to that how a iron rod gets rutsed due to the variable climatic conditions.	
3.	<b>Leaf Smuts:</b>	<b>Fungal Disease</b>	This disease is found in the areas where the agricultural field is dense rich since the sunlight does not enter inside the ground that much easier.	
4.	<b>Scab leaves:</b>	<b>Fungal Disease</b>	This disease is found in the leaves during the crop yielding period.	
5.	<b>Plant Blotch:</b>	<b>Fungal disease</b>	Due to the over usage of the fertilizer s, the these viral disease affects the plants.	
6.	<b>Tar leaf spots:</b>	<b>Fungal Disease</b>	It is seen by the naked eyes by the farmers since it looks the big size	

			lesions when the human burn into the fire.	
7.	<b>Chlorosis:</b>	<b>Viral Disease</b>	This is one of the commonly occurring viral disease that can appear as the brown spots in the plant.	

6

**PROPOSED METHODOLOGY:**

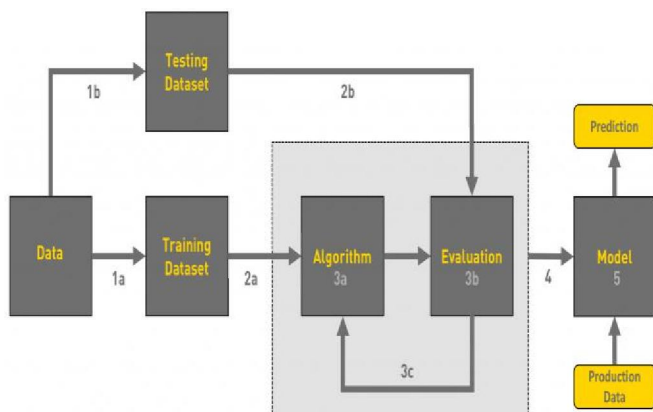
In our Proposed methodology “Disease detection with Auto-Spraying Mechanism (DD-ASM)“, after the plant disease is detected or identified, an auto spraying mechanism is implemented which is responsible for providing the medicines for their respective diseases. Though there are different traditional methods for identification of plant leaf disease, the key to decrease agriculture loss is detection and cure of plant disease. In our proposed method we are using the Support Vector Machine algorithm which is used to classify the features in efficient manner. Also, by our method, the infected or diseased parts of the plant leaf can be segregated and the respective solution is provided to cure that part of plant. The accuracy can be increased when trained with vast number of images and by using other local features together with the global features.

In leaf disease detection, various classifiers are used to classify the disease of data. The classification is based on healthy and affected/diseased leaf or other parts of plant.

The Detection and Prevention to these infections of a herb will be the major requirement of the farming and cultivating people. So these diseases should be identified and treated in the early stages as soon as possible, so that it results in prevention or protection of the other plants from this risk factor.

- The primary aim of our project will be motivated to manufacture an automated device that implements both detection or finding and prevention of these diseases that occurs to the plants of the agricultural fields. This system will be effective and very useful for the farmers purposely older people who work in the agricultural lands.

**CONVOLUTIONAL NEURAL NETWORKS:**



- To identify and determine the unhealthy parts of the plant leaves using image features.

- Test for the leaf infection.

- The examined information should be forwarded to the farmer for the prevention of other plants from the infection.

- Develop an new application with the help of android development and embed with the IoT.

### A. Problem Detection:

A major cause in the EXISTING system was that these bacterial, fungal, viral diseases are mostly judged by their naked eyes of farmers based on their experience. Many times, these diseases may be either identified or diagnosed wrong. A cause of infection may be have a visibility effects of disease on the plant. Thus infections also include a identifiable transformation in the color, shapes or functions or an texture of the plant leaf because it reflects to the micro organisms. Leaves wilting may be a common infection that is a result by the fungal plant pathogens *Verticillium albo-atrum* and *V. dahliae*.

### B. Identification of Plant Infections:

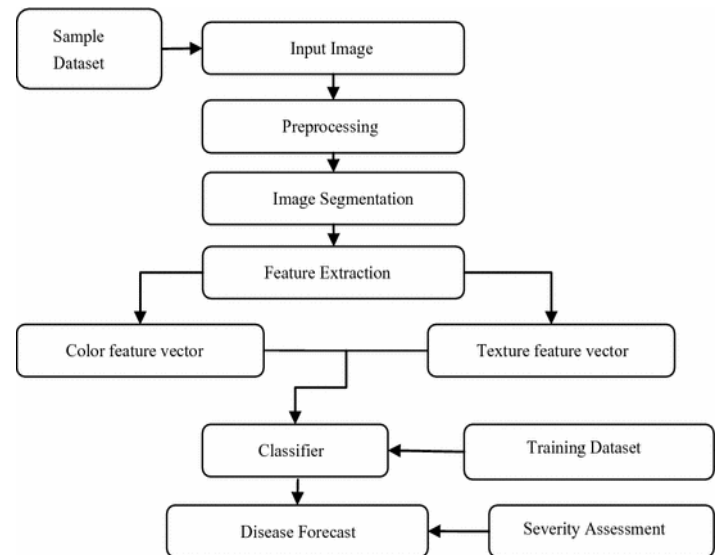
Infections that are seen on herbs are detected based on the colourpoints , streaks on leaves, stems and seeds. So disease progresses is identified based on the the visual infections because they may increases.

### ARCHITECTURALDIAGRAM:

Plant leaf disease detection includes some basic step of image processing to detect & classify plant leaf disease.

- 1) Image acquisition
- 2) Image pre-processing
- 3) Image segmentation
- 4) Feature extraction
- 5) Training the designed model
- 6) Classification
- 7) leaf disease detection
- 8) Testing the model
- 9) Evaluation

The overall architecture of four plant disease detection system is represented below figure 6.1:



The testing and training are the two important processes of a machine learning project. Whenever a model is designed using the machine learning algorithm the model should be first trained using all the number of datasets available. And in the similar way, the trained system is tested with some number of datasets that are already trained using the datasets. The steps or process of the testing and training is shown below:

- 1) Data is the images that can be given as the input to the system to process the images and classify as the healthy or the unhealthy leaf of the plant.
- 2) The training of dataset is the one that "teaches" an algorithm to recognize patterns in a dataset, from the previous set of data.
- 3) The next step is the testing of the collected dataset by the means of the process of a test (or validation) in order to examine the model.
- 4) Evaluation is an important process in the testing and training of the dataset of the machine of the proposed system. Once the system is trained then the input data sets are given and the system is evaluated based on the training.
- 5) Predicting is an important reading strategy that allows the students who are doing the project that may happen based on the previous knowledge of the dataset.

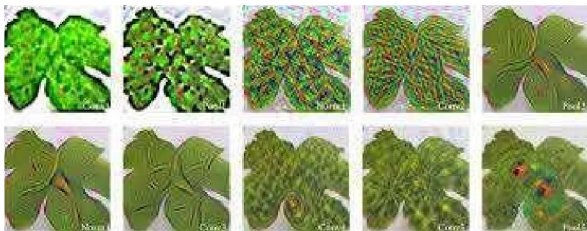


### Problem Identification:

The problem in existing system is that the diseases are mostly judged by experience of farmers. Many times the disease is either detected or diagnosed wrong.

### Identification Of Plant Diseases:

Diseases in plants are identified based on the symptoms such as color spots on leaves, streaks on leaves, stem and seeds. As disease progresses it is indicated by the visual symptoms as they increase. In leaf disease identification, different number of variable classifiers were engaged to find various numbers of diseases of datasets. This classification mechanism depends on healthy and unhealthy leaf based on the various classification algorithms and other points of the herb. The below figure or the diagram shows the identification of the diseased image using the naked eyes. But after giving this image into the system, it



processes many steps as represented in the below figure 6.3:

Figure 6.3 Disease Identification

## 7 MODULE DESCRIPTION:

- a. *Image Acquisition*: The first stage of any vision system is the image acquisition as shown in the below figure 7.1. Image acquisition involves the steps to obtain the plant leaf and captured the high quality images through the camera. In Image acquisition, the input data are being gathered. Images are acquired from the internet or agriculture field. The



efficiency of the concept depends upon the quality of database images. This image is in RGB (Red, Green, and Blue) form.

- b. *Image Pre-Processing*: Image pre-processing involves the steps of image enhancement, RGB to Lab conversion, filtering etc. Here, image enhancement is carried out for increasing the contrast. Image smoothing is done using the



filtering techniques. There are different types of filtering techniques available in image processing like median filter, average filter, Gaussian filter etc. In image pre-processing, the acquired image is processed and converted into the RGB scale images as shown in the following figure 7.2

figure 7.2 Image Pre-Processing

- c) *Image Segmentation*:

Image segmentation means partitioning of image into various parts of same features or having some similarity. The segmentation can be done using various methods like otsu's method, k-means clustering, converting RGB image into HIS model etc. The K-means clustering is used for classification of object based on a set of features into K number of classes. The classification of object is done by

minimizing the sum of the squares of the distance between the object and the corresponding cluster. In image Segmentation figure 7.3, the image is split into different parts having similar features called image gesture

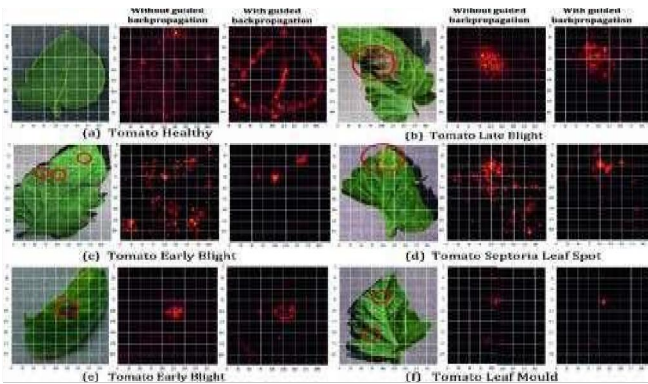


Figure 7.3 Image Segmentation

#### D. Feature Extraction :

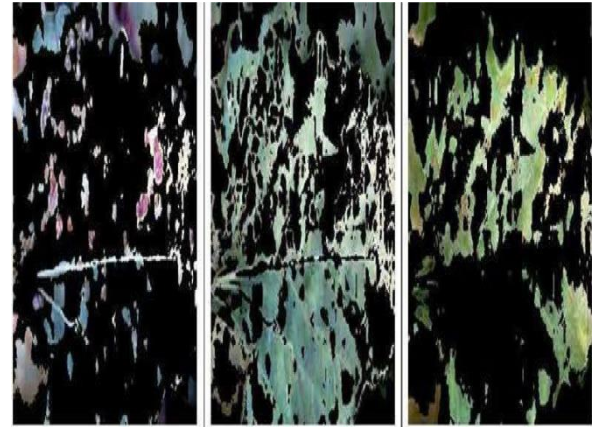
Features are parts or patterns of an image that help to identify the proportions. Colour Gradient Histogram: This is the commonly used methodology that mainly focusses on the primary colour gradients such as RED, BLUE, GREEN values of the images that is being observed from the datasets of the plant leaves.

#### E. Training the model:

The important process of the machine learning process is the training and testing the designed AI system with better performance and the expected output from the trained system. In order to train the AI model through the machine learning algorithms required or specified set of processes should be carried out that involves the acquiring training data with the help of the particular algorithm, validation of the model and implementation to verify and validate with the real time use.

#### F. Classification & Detection of Diseases :

Finally, classifiers are used for the training and testing of the datasets. These classifiers may support vector machine (SVM), k-nearest



neighbour, neural network, fuzzy logic based etc. These methods are used to classify and detect the leaf diseases. The classification plays an important role in the image separation part. Here we use a famous supervised machine learning classification algorithm called support vector machines. It is shown in the following figure 7.4

Figure 7.4 Classification of healthy and unhealthy leaf

#### G. Testing the input data:

Once the model is trained with the right (chosen) algorithm, the system is exposed to the outside environment. But testing the designed model with AI model or AI framework is somewhat complex. Though, it follows many steps used during the functional testing mechanisms such as learning from the various resources or the data sources, input data conditioning, machine learning and analytics, visualization and finally the feedback about the output from the system.

#### H. Evaluation of the output:

The important process in the machine learning is the evaluation of the output. This may be carried out by having the comparison of the our system i.e the designed system output with the other systems output by comparing the three

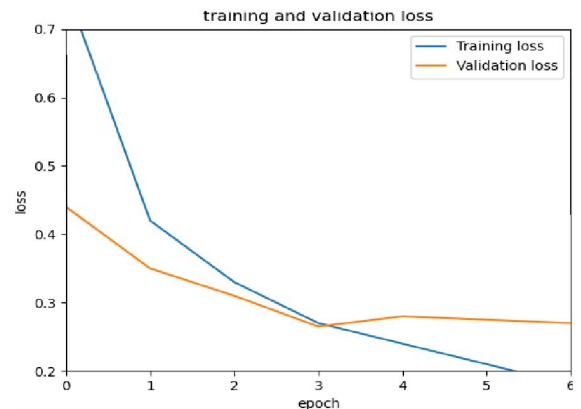
major metrics such as the accuracy, precision and recall where the accuracy of the system plays the vital role than other metrics. Here accuracy is defined as the percentage or the measurement of the number of correct predictions for the test data.

## 8 Experimental Results and Discussion:

Though there are different traditional methods for identification of plant leaf disease, the key to decrease agriculture loss is detection and cure of plant disease. This study shows the key features and the importance of the plant disease recognition, identification, prevention these days. In our proposed method we are using the Support Vector Machine algorithm which is used to classify the features in efficient manner. Also, in this work we have used the convolution neural network model for the testing, training and validating the input provided by the user to the system and by our method, the infected or diseased parts of the plant leaf can be segregated and the respective solution is provided to cure that part of plant.

The below mentioned are the some of the village datasets available for our project work which are used for testing and training the neural network model. The accuracy of the system can be increased when trained with vast number of images and by using other local features together with the global features. Here we have used 10 the total number of epochs in which 20% of the images from the plant dataset of the village aware used to test the accuracy of this model. In every class, 20% of the images were randomly selected for testing purpose. The testing dataset

gives more than 96% accuracy which means, if 100 images are inputted then 95 images were classified correctly. When the training dataset is increased and the epochs, the epochs the accuracy is also increased and finally at the 6<sup>th</sup> epoch, the designed network model gives the highest accuracy.

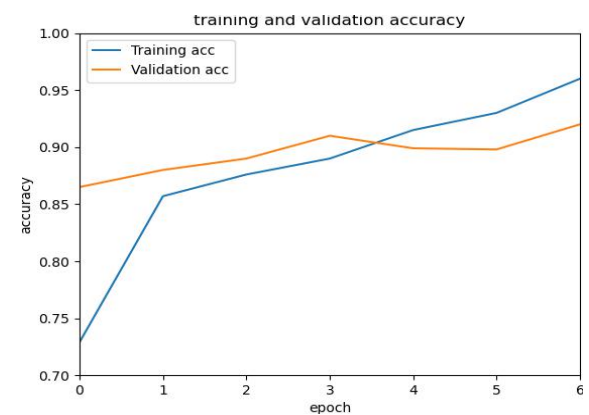


The accuracy and the loss for both training and validation graphs generated by the model are shown below. With Every sickness having differing side effects, from the leaves, stem and root of the plant. This method may help the agriculturists in IDENTIFYING AND CURING of the infection in the leaf in plausible and precise path, in brief time traverse.

### Training and validation Accuracy:

The below web page that contains the GUI for the leaf disease detection using OpenCV where a button is available named “browse image” for uploading the image from the available Village datasets.

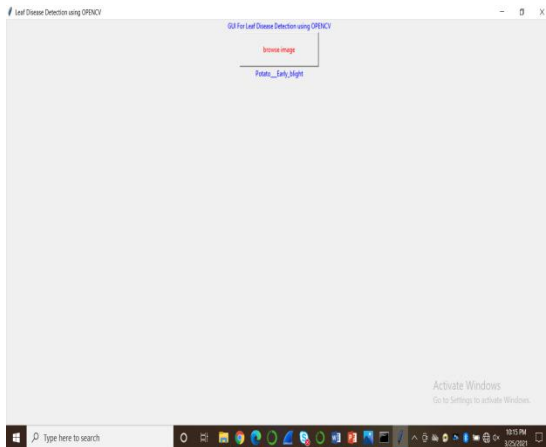
The pictures may be downloaded and



Name of the Method	% of Accuracy
Proposed Method (SVM & CNN)	96%
Supervised algorithm and Fuzzy sets	95.17%
Feed Forward Neural Network	94.89%
K means and Neural network	93%
ANN	91%

the web and even the images that are captured by the normal camera also.

The colour images are considered and the images should be in the .jpg format. Once the image is successfully uploaded, then the below will be the result showing the predictions of leaf disease affected to that plant or the health status of the leaf as an output.



## Plant Health Prediction

### 9 Comparative Work:

The various comparative studies of our project with the different number of the machine algorithms are listed below in the form of the tabular representation.

Further the performance evaluation are compared based on the algorithm specification with the performance evaluation.

## 10 Conclusion

Agricultural farming is one of the most important sectors that provides a large number of human employment opportunities to many people and to the Indian economy. In order to yield food crops and natural plant products and also to have a raise in the economy of any country, there must be a prediction of diseases in the crops is very much important and need these days. The proposed system Disease detection with Auto-Spraying Mechanism (DD-ASM) the designed CNN model is used to classify the different plant diseases obtained from the Plant Village dataset. Also our proposed CNN model provides a very good solution to predict the various types of the plant diseases in the early stage itself. Also the additional benefit of our system is that once the disease is detected, it can be prevented based on the auto spraying mechanism. The pesticides, fungicides, insecticides are auto sprayed on the respective plant leaves with the corresponding chemicals.

## References

1. Sachin D. Khirade, A.B Patil, "Plant Disease Detection Using Image

- Processing”, International Conference on Computing Communication Control and Automation”, 2015.
2. V. S. Dattatraya, K. S. Sudhir,” Low cost sensor based embedded system for plant protection and pest control,” International Conference on Soft Computing Techniques and Implementations (ICSCTI), IEEE, 2015, pp. 179-184.
  3. S. Rajeswari, K. Suthendran, K. Rajakumar,” A smart agricultural model by Integ`rating IoT, mobile and cloud-based big data analytics,” International Conference on Intelligent Computing and Control (I2C2), IEEE, 2017, pp.15.
  4. K. P. Sai, N. Bharathiraja, J. G. Smith, D. Vivek,” eAgrobot- A robot for early crop disease detection using image processing,” International Conference on Electronics and Communication Systems (ICECS), IEEE, 2015, pp. 1-6.
  5. R. Ramesh,” Predictive analytics for plant disease prediction of data using AWS machine learning cloud service,” International Conference on Computing and Communications Technologies (ICCCT), IEEE, 2017, pp. 210-215.
  6. AakankshaRastogi, Ritika Arora and Shanu Sharma. “Leaf Disease Detection and Grading using Computer Vision Technology &Fuzzy Integrated Network (SPIN), IEEE, 2015.
  7. Rothe, P. R., and R. V. Kshirsagar. “Cotton Leaf Disease Identification using Pattern Recognition Techniques.” In Pervasive Computing (ICPC), 2015 International Conference on, pp. 1-6. IEEE, 2015.
  8. Arivazhagan, S., R. NewlinShebiah, S. Ananthi, and S. Vishnu Varthin. “Detection of unhealthy region of plant leaves and classification of plant leaf diseases using texture features.” Agriculture Engineering International: CIGR Journal 15, No.1 (2016): 211-217.
  9. Kiran R. Gavhale andUjwallaGawande. “An Overview of the Research on Plant Leaves Disease detection using Image Processing Techniques.” IOSR Journal of Computer Engineering, January 2015. S.
  10. S. Sannakki and V. S. Rajpurohit,” Classification of Pomegranate Diseases Based on Back Propagation Neural Network,” International Research Journal of Engineering and Technology (IRJET), Vol2 Issue:2 May-2015.
  11. AakankshaRastogi, Ritika Arora and Shanu Sharma,” Leaf Disease Detection and Grading using Computer Vision Technology &Fuzzy Logic” 2nd International Conference on Signal Processing and Integrated Networks (SPIN)2015.
  12. GodliverOwomugisha, John A. Quinn, Ernest Mwebaze and James Lwasa,” Automated Vision-Based Diagnosis of Banana Bacterial Wilt Disease and Black Sigatoka Disease “, Preceding of the 1’st international conference on the use of mobile ICT in Africa ,2014.
  13. uan Tian, Chunjiang Zhao, Shenglian Lu and XinyuGuo,” SVM-based Multiple Classifier System for Recognition of

- Wheat Leaf Diseases,” Proceedings of 2010 Conference on Dependable Computing (CDC’2010), November 20-22, 2010.
14. S. Yun, W. Xianfeng, Z. Shanwen, and Z. Chuanlei, “Cnn based crop disease recognition with leaf image features and meteorological data,” *International Journal of Agricultural and Biological Engineering*, vol. 8, no. 4, p. 60, 2015.
  15. J. G. A. Barbedo, “Digital image processing techniques for detecting, quantifying and classifying plant diseases,” *Springer Plus*, vol. 2, no.660, pp. 1–12, 2013.
  16. Caglayan, A., Guclu, O., & Can, A. B. (2013, September). “A plant recognition approach using shape and color features in leaf images.” In *International Conference on Image Analysis and Processing* (pp. 161-170). Springer, Berlin, Heidelberg.
  17. Zhen, X., Wang, Z., Islam, A., Chan, I., Li, S., 2014d. “Direct estimation of cardiac bi-ventricular volumes with regression forests.” In: *Accepted by Medical Image Computing and Computer-Assisted Intervention MICCAI 2014*.
  18. Wang P., Chen K., Yao L., Hu B., Wu X., Zhang J., et al. (2016).” *Multimodal classification of mild cognitive impairment based on partial least squares*”.
  19. S. Delalieux, J. van Aardt, W. Keulemans, E. Schrevens, P. Coppin, Detection of biotic stress (*Venturiainaequalis*) in apple trees using hyperspectral data: Non-parametric statistical approaches and physiological implications. *Eur. J. Agron.* 27, 130–143 (2013).
  20. G. Ying, L. Miao, Y. Yuan, H. Zelin, A study on the method of image preprocessing for recognition of crop diseases, in *International Conference on Advanced Computer Control* (2012).
  21. DhimanMondal, Dipak Kumar Kole, Aruna Chakraborty, D. Dutta Majumder" Detection and Classification Technique of Yellow Vein Mosaic Virus Disease in Okra Leaf Imagesusing Leaf Vein Extraction and Naive Bayesian Classifier., 2015, *International Conference on Soft Computing Techniques and Implementations- (ICSCTI)* Department of ECE, FET, MRIU, Faridabad, India, Oct 8-10, 2015.
  22. Pranjali B. Padol, Prof. Anjila.Yadav, "SVM Classifier Based Grape Leaf Disease Detection" 2016 *Conference on Advances in Signal Processing(CAPS)* Cummins college of Engineering for Women, Pune. June 9-11, 2016.
  23. Detecting jute plant disease using image processing and machine learning 2016 3rd *International Conference on Electrical Engineering and Information Communication Technology (ICEEICT)*.
  24. TejoindhiM.R, Nanjesh B.R, JagadeeshGujanuru Math, AshwinGeetD'sa "Plant Disease Analysis Using Histogram Matching Based On Bhattacharya's Distance Calculation" *International Conference on Electrical,*

- Electronics and Optimization Techniques(ICEEOT)-2016.
25. Detection of unhealthy plant leaves using image processing and genetic algorithm with Arduino2018 International Conference on Power, Signals, Control and Computation (EPSCICON).
  26. Tanvimehera, vinaykumar,pragyagupta "Maturity and disease detection in tomato using computer vision" 2016 Fourth international conference on parallel, distributed and grid computing(PDGC).
  27. Ms.Poojapawar, Dr.varshaTukar, prof.parvinpatil "Cucumber Disease detection using artificial neural network". International Conference on Soft Computing Techniques and Implementations- (ICSCTI) Department of ECE, FET, MRIU, Faridabad, India, Oct 8-10, 2015.
  28. G.Mittal and Shreyav.H in the Detection and measurement of paddy leaf disease symptoms using image processing.
  29. Mukesh Kumar Tripathi, Dr.Dhananjay, D.Maktedar" Recent Machine Learning Based Approaches for Disease Detection and Classification of Agricultural Products" International Conference on Electrical, Electronics and Optimization Techniques (ICEEOT)-2016.
  30. Detection of leaf diseases and classification using digital image processing 2017 International Journal of Agricultural and Biological Engineering, vol. 8, no. 4, p. 60, 201